

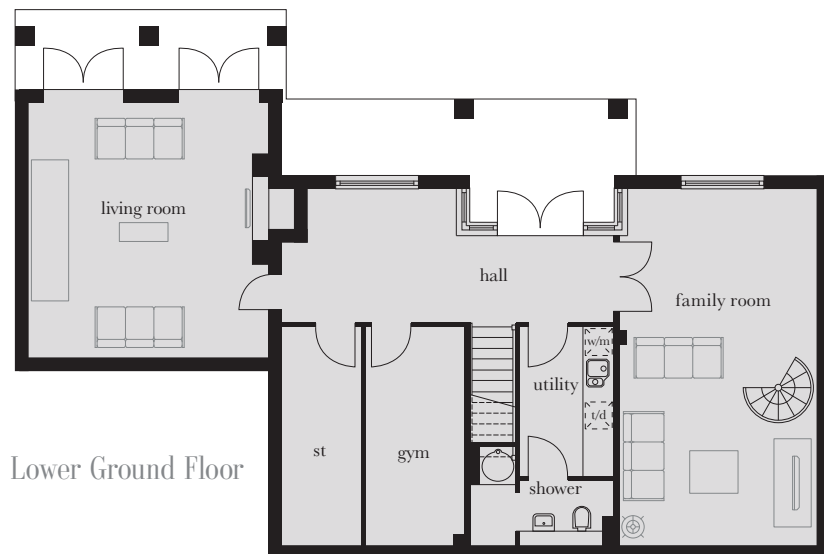
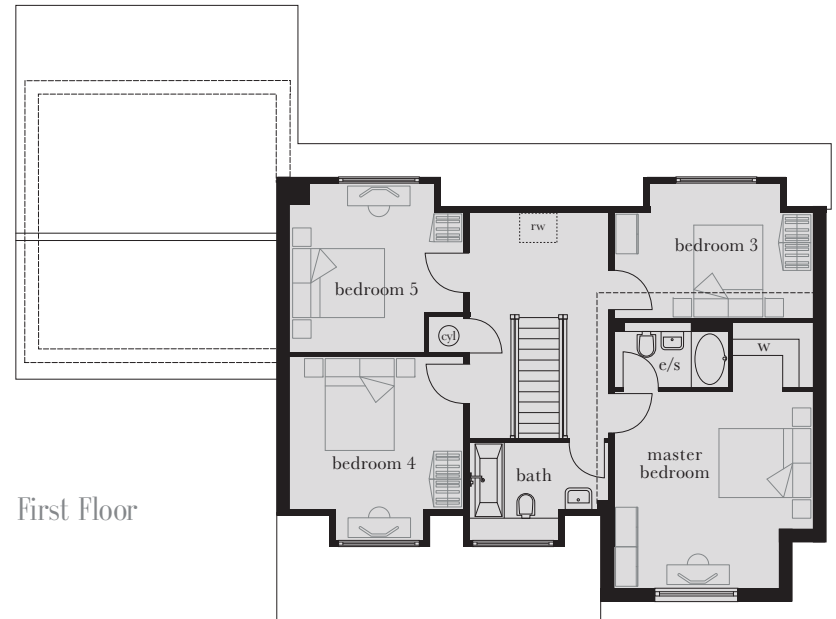
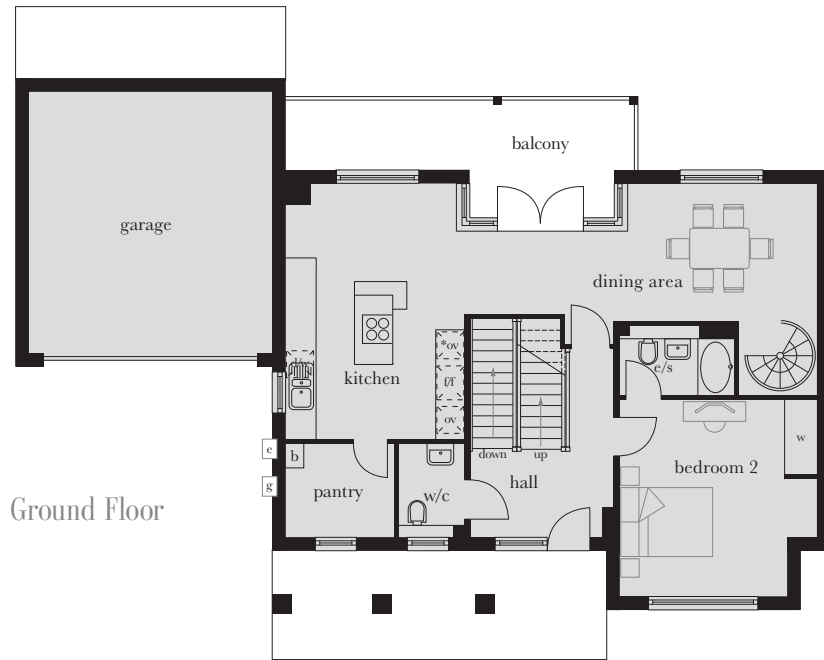
The Snowhill

Plots 15 & 37

This majestic five bedroom home offers a host of sought-after features, including its own gym, pantry, utility room and double garage. Set over three floors, it also benefits from both a living room and a family room.



Computer generated image shown above of plot 37. External finishes and landscaping may vary. Please refer to Sales Advisor for further details. All dimensions are approximate and should not be used for carpet sizes, appliance spaces or furniture. Furniture not to scale and all positions are indicative. Wardrobes are shown to suggest position only, and are not included as standard unless otherwise stated. We operate a policy of continuous improvement and individual features such as kitchen and bathroom layouts, doors, windows, garages and elevational treatments may vary from time to time. Consequently these particulars should be treated as general guidance only and do not constitute a contract, part of a contract or a warranty.



First Floor

Master Bedroom	4.302m x 4.247m (max) (max)	15'1" x 13'11" (max) (max)
Bedroom 3	4.247m x 3.003m (max) (max)	13'11" x 9'10" (max) (max)
Bedroom 4	3.794m x 3.763m (max) (max)	12'5" x 12'4" (max) (max)
Bedroom 5	4.035m x 3.794m (max) (max)	13'3" x 12'5" (max) (max)

Ground Floor

Kitchen	5.530m x 3.794m	18'2" x 12'5"
Dining Room	4.591m x 4.247m (max) (max)	15'1" x 13'11" (max) (max)
Bedroom 2	4.247m x 4.207m (max) (max)	13'11" x 13'10" (max) (max)
Pantry	2.340m x 2.035m	7'8" x 6'8"

Lower Ground Floor

Living Room	5.450m x 5.056m	17'11" x 16'7"
Family Room	7.618m x 4.247m	25'0" x 13'11"
Gym	4.730m x 2.142m	15'6" x 7'0"

st	cupboard	tall housing accommodating integrated single oven and microwave	w/m	integrated washing machine	D	boiler	rw	roof window
e/s	en suite	integrated single oven	d/w	integrated dishwasher	g	gas meter	h	hot water cylinder
w	wardrobe	American fridge/freezer	t/d	tumble dryer space	e	electric meter	---	reduced head height