

# The Hatchlands

## Plot 14

Characterful and quirky, this five bedroom family home benefits from a terrace, balcony and double garage. The master bedroom boasts two dressing rooms and an en suite, while there's also a study perfect for a home worker or student.

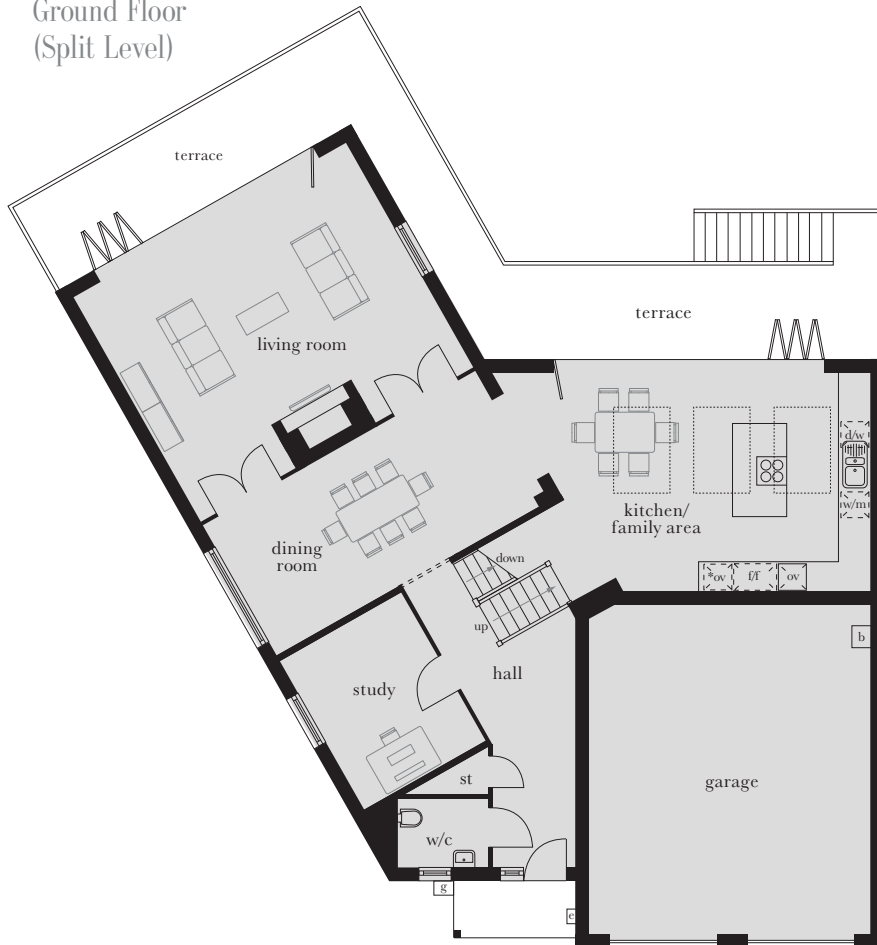


*Computer generated image shown above. External finishes and landscaping may vary. Please refer to Sales Advisor for further details. All dimensions are approximate and should not be used for carpet sizes, appliance spaces or furniture. Furniture not to scale and all positions are indicative. Wardrobes are shown to suggest position only, and are not included as standard unless otherwise stated. We operate a policy of continuous improvement and individual features such as kitchen and bathroom layouts, doors, windows, garages and elevational treatments may vary from time to time. Consequently these particulars should be treated as general guidance only and do not constitute a contract, part of a contract or a warranty.*

## First Floor



## Ground Floor (Split Level)



### First Floor

Master Bedroom	4.360m x 4.141m	14'1" x 13'7"
Bedroom 2	4.987m x 4.213m	16'4" x 13'10"
Bedroom 3	6.431m x 3.517m	21'1" x 11'6"
Bedroom 4	3.023m x 2.871m	9'11" x 9'5"
Bedroom 5	4.367m x 3.023m	14'4" x 9'11"

### Ground Floor

Kitchen/Family Area	7.958m x 4.597m (max)	26'2" x 15'1" (max)
Living Room	6.616m x 5.515m	21'8" x 18'1"
Dining Room	6.616m x 3.140m	21'8" x 10'4"
Study	3.688m x 2.975m	12'1" x 9'9"

st	cupboard	*ov	tall housing accommodating integrated single oven and microwave	w/m	integrated washing machine	b	boiler	L	loft hatch
e/s	en suite	ov	integrated single oven	d/w	integrated dishwasher	g	gas meter	rw	roof window
w	wardrobe	ff	American fridge/freezer	hw	hot water cylinder	e	electric meter	.....	vaulted ceiling