

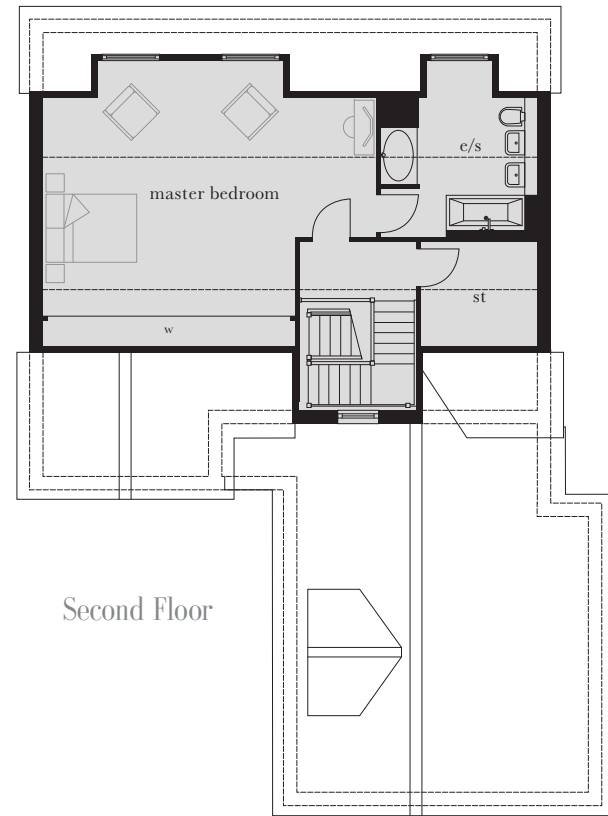
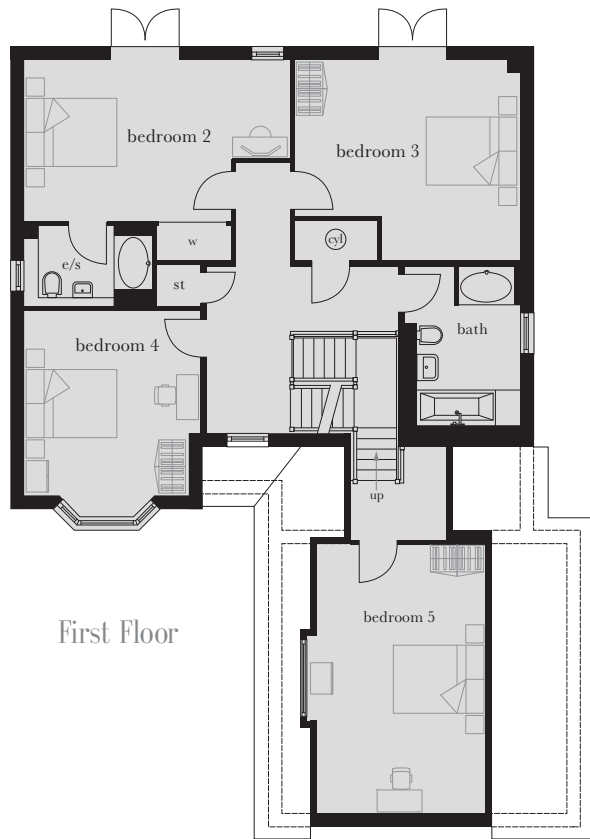
The Fernlea

Plot 34

A striking five bedroom home, with one floor devoted to the master bedroom and its en suite. Other features include a double garage, open plan kitchen/family area, utility room and study.



Computer generated image shown above. External finishes and landscaping may vary. Please refer to Sales Advisor for further details. All dimensions are approximate and should not be used for carpet sizes, appliance spaces or furniture. Furniture not to scale and all positions are indicative. Wardrobes are shown to suggest position only, and are not included as standard unless otherwise stated. We operate a policy of continuous improvement and individual features such as kitchen and bathroom layouts, doors, windows, garages and elevational treatments may vary from time to time. Consequently these particulars should be treated as general guidance only and do not constitute a contract, part of a contract or a warranty.



Second Floor

Master Bedroom 7.118m x 4.655m 23'3" x 15'3"

First Floor

Bedroom 2 5.672m x 3.474m 18'7" x 11'5"

Bedroom 3 4.820m x 4.300m 15'10" x 14'1"

Bedroom 4 3.945m x 3.752m 12'11" x 12'4"

Bedroom 5 5.748m x 3.670m 18'10" x 12'0"

Ground Floor

Kitchen 4.550m x 4.300m 14'11" x 14'1"

Family/Dining Area 6.036m x 3.700m 19'10" x 12'2"

Living Room 5.500m x 3.750m 18'0" x 12'4"

Study 3.100m x 2.450m 10'2" x 8'0"

st	cupboard	o	tall housing accommodating integrated single oven and microwave	w/m	integrated washing machine	b	boiler	cy	hot water cylinder
c/s	en suite	ov	integrated single oven	d/w	integrated dishwasher	g	gas meter	---	reduced head height
w	wardrobe	f	American fridge/freezer	t/d	tumble dryer space	e	electric meter		