

The *Cleveland B*

Plots 33 & 51

A beautiful five bedroom home with a large kitchen and dining area to entertain. The master bedroom has its own dressing area and en suite with an additional four double bedrooms and three bathrooms on the upper floors.

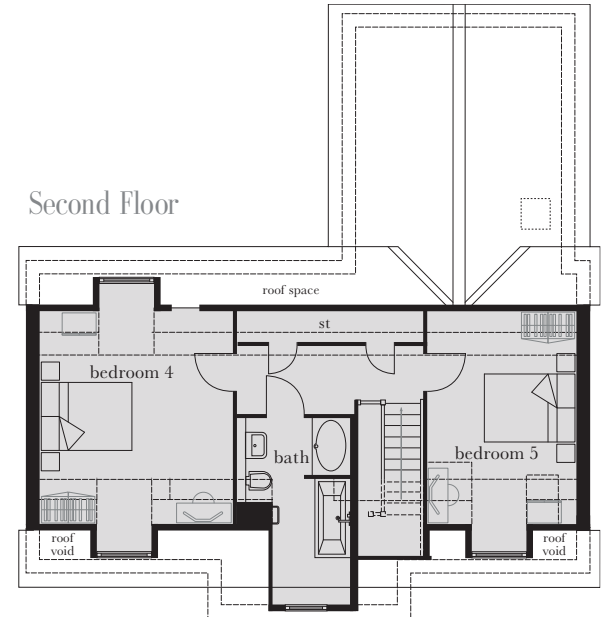


Computer generated image shown above of plot 51. External finishes and landscaping may vary. Please refer to Sales Advisor for further details. All dimensions are approximate and should not be used for carpet sizes, appliance spaces or furniture. Furniture not to scale and all positions are indicative. Wardrobes are shown to suggest position only, and are not included as standard unless otherwise stated. We operate a policy of continuous improvement and individual features such as kitchen and bathroom layouts, doors, windows, garages and elevational treatments may vary from time to time. Consequently these particulars should be treated as general guidance only and do not constitute a contract, part of a contract or a warranty.

First Floor



Second Floor



Ground Floor



Second Floor

Bedroom 4	4.585m x 3.965m	15'1" x 13'0"
Bedroom 5	4.585m x 3.195m	15'1" x 10'6"

First Floor

Master Bedroom	4.650m x 3.705m	15'3" x 12'2"
Dressing Area	3.115m x 2.245m	10'2" x 7'4"
Bedroom 2	4.380m x 2.895m	14'5" x 9'6"
Bedroom 3	3.750m x 3.195m	12'4" x 10'6"

Ground Floor

Kitchen	6.045m x 3.872m (min)	19'9" x 12'8" (min)
Living Room	5.135m x 4.380m	16'10" x 14'5"
Dining Room	3.680m x 3.140m (min)	12'1" x 10'4" (min)
Study	3.139m x 2.270m	10'4" x 7'5"

st	cupboard	o/m	tall housing accommodating integrated single oven and microwave	w/m	integrated washing machine	b	boiler	rw	roof window
e/s	en suite	ov	integrated single oven	d/w	integrated dishwasher	g	gas meter	hw	hot water cylinder
w	wardrobe	f/f	American fridge/freezer	t/d	tumble dryer space	e	electric meter	---	reduced head height