

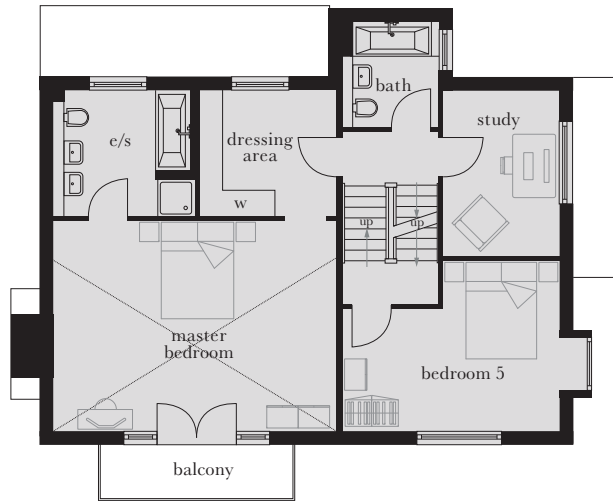
The Chartwell

Plot 6

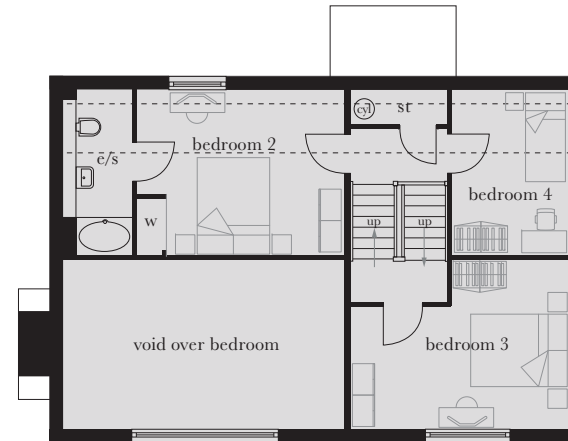
A delightful five bedroom, three storey family home boasting a feature balcony and vaulted ceiling to the master bedroom. A welcoming house offering lots of space to entertain with a living room, open plan kitchen/family room and a separate dining room.



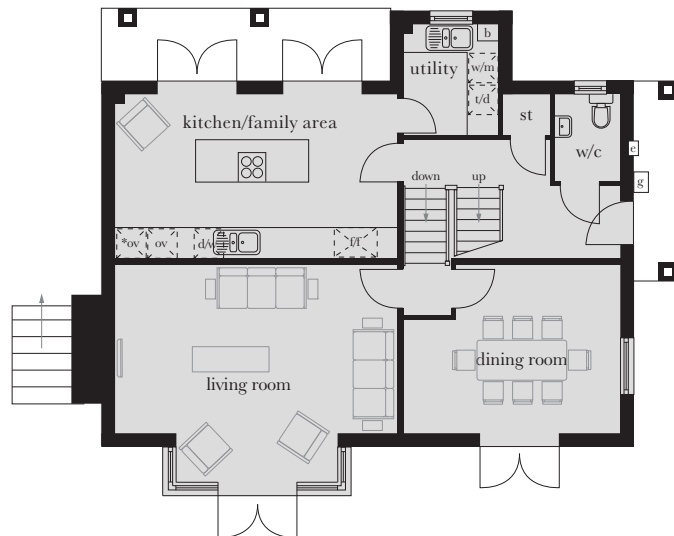
Computer generated image shown above. External finishes and landscaping may vary. Please refer to Sales Advisor for further details. All dimensions are approximate and should not be used for carpet sizes, appliance spaces or furniture. Furniture not to scale and all positions are indicative. Wardrobes are shown to suggest position only, and are not included as standard unless otherwise stated. We operate a policy of continuous improvement and individual features such as kitchen and bathroom layouts, doors, windows, garages and elevational treatments may vary from time to time. Consequently these particulars should be treated as general guidance only and do not constitute a contract, part of a contract or a warranty.



First Floor
(Split Level)



Second Floor
(Split Level)



Ground Floor
(Split Level)

Second Floor

Bedroom 2	4.476m x 3.555m	14'8" x 11'7"
Bedroom 3	4.649m x 3.655m (max)	15'3" x 11'11" (max)
Bedroom 4	3.555m x 2.506m	11'7" x 8'2"

First Floor

Master Bedroom	6.050m x 4.502m	19'10" x 14'9"
Bedroom 5	3.555m x 2.506m	11'7" x 8'2"
Study	4.649m x 3.655m (max)	15'3" x 11'11" (max)

Ground Floor

Kitchen/Family Area	6.050m x 3.523m	19'10" x 11'10"
Living Room	6.050m x 4.708m (max)	19'10" x 15'5" (max)
Dining Room	4.649m x 3.623m	15'3" x 11'8"

st	cupboard	*ov	tall housing accommodating integrated single oven and microwave	w/m	integrated washing machine	b	boiler	⊗	hot water cylinder
e/s	en suite	ov	integrated single oven	d/w	integrated dishwasher	g	gas meter	---	reduced head height
w	wardrobe	f	American fridge/freezer	t/d	tumble dryer space	e	electric meter	vaulted ceiling