

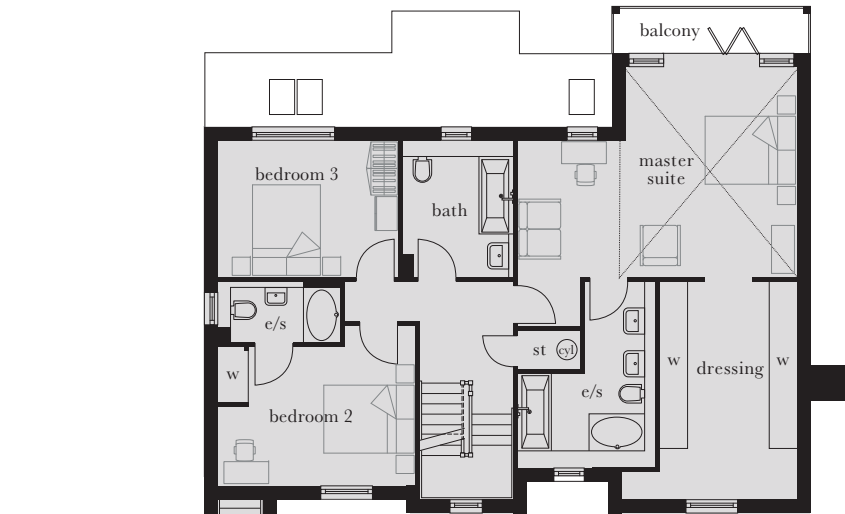
The Anglesey

Plots 35 & 36

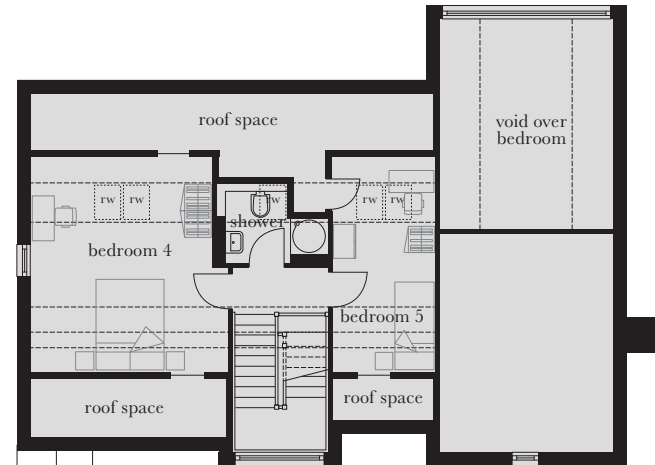
A spectacularly appointed five bedroom property which comes complete with its own studio apartment over the double garage.
The master suite to the first floor features a private bathroom and dressing area.



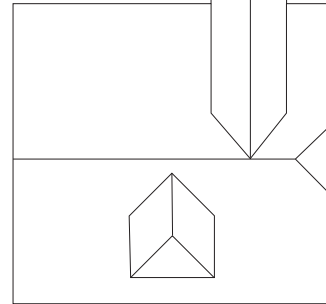
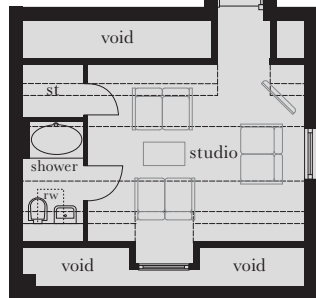
Computer generated image shown above. External finishes and landscaping may vary. Please refer to Sales Advisor for further details. All dimensions are approximate and should not be used for carpet sizes, appliance spaces or furniture. Furniture not to scale and all positions are indicative. Wardrobes are shown to suggest position only, and are not included as standard unless otherwise stated. We operate a policy of continuous improvement and individual features such as kitchen and bathroom layouts, doors, windows, garages and elevational treatments may vary from time to time. Consequently these particulars should be treated as general guidance only and do not constitute a contract, part of a contract or a warranty.



First Floor



Second Floor



Ground Floor

Second Floor

| | | |
|-----------|--------------------------|------------------------|
| Bedroom 4 | 4.676m x 4.295m (max) | 15'3" x 14'1" (max) |
| Bedroom 5 | 4.676m x 2.278m (max) | 15'3" x 7'5" (max) |

First Floor

| | | |
|--------------|--------------------------|-------------------------|
| Master Suite | 9.350m x 6.095m (max) | 30'7" x 19'10" (max) |
| Bedroom 2 | 4.295m x 3.432m (max) | 14'1" x 11'3" (max) |
| Bedroom 3 | 3.926m x 2.949m | 12'9" x 9'7" |
| Studio | 4.703m x 3.838m | 15'6" x 12'7" |

Ground Floor

| | | |
|---------------------|--------------------------|------------------------|
| Kitchen/Family Room | 8.614m x 4.961m (max) | 28'3" x 16'3" (max) |
| Living/Dining Room | 9.349m x 4.163m (max) | 30'7" x 13'7" (max) |
| Study | 3.048m x 2.722m | 10'0" x 8'9" |

| | | | | | | | | | | | |
|-----|----------|-----|---|-----|----------------------------|---|----------------|-----|--------------------|-------|---------------------|
| st | cupboard | ov | tall housing accommodating integrated single oven and microwave | w/m | integrated washing machine | b | boiler | hwc | hot water cylinder | | vaulted ceiling |
| e/s | en suite | ov | integrated single oven | d/w | integrated dishwasher | g | gas meter | rw | roof window | --- | reduced head height |
| w | wardrobe | f/f | American fridge/freezer | t/d | tumble dryer space | e | electric meter | | | | |