

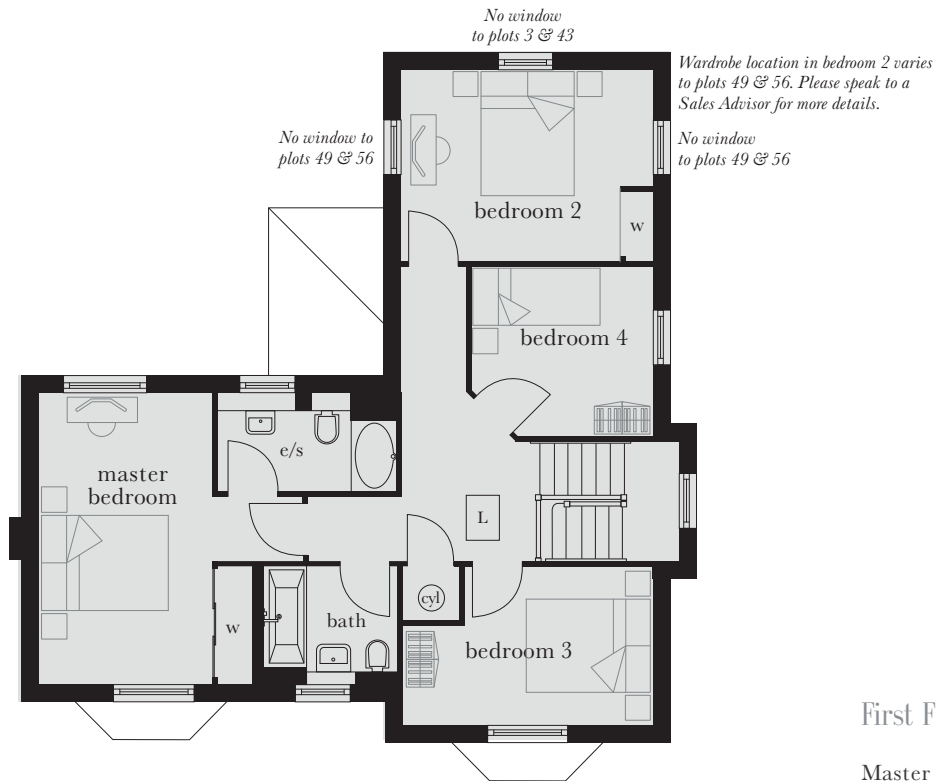
# The Worley

Plots 3, 43, 49 & 56

A striking L-shaped home with plenty of room for the whole family. To the ground floor is a spacious living room plus open plan kitchen with extra dining/family area. There's also a WC and a study, while upstairs there are four bedrooms with an en suite to the master bedroom plus a family bathroom.



*Computer generated image shown above of plots 3 and 43. External finishes and landscaping may vary. Please refer to Sales Advisor for further details. All dimensions are approximate and should not be used for carpet sizes, appliance spaces, or furniture. Furniture not to scale and all positions are indicative. Wardrobes are shown to suggest position only, and are not included as standard unless otherwise stated. We operate a policy of continuous improvement and individual features such as kitchen and bathroom layouts, doors, windows, garages and elevational treatments may vary from time to time. Consequently these particulars should be treated as general guidance only and do not constitute a contract, part of a contract or a warranty.*



First Floor

### First Floor

Master Bedroom	4.755m x 2.930m (max)	15'7" x 9'7" (max)
Bedroom 2	4.115m x 3.160m	13'6" x 10'5"
Bedroom 3	4.115m x 2.600m (min)	13'6" x 8'6" (min)
Bedroom 4	2.975m x 2.820m (min)	9'9" x 9'3" (min)



Ground Floor

### Ground Floor

Kitchen	4.110m x 2.845m	13'6" x 9'4"
Dining/Family Area	5.825m x 3.710m	19'2" x 12'2"
Living Room	4.755m x 4.055m	15'7" x 13'4"
Study	3.065m x 2.600m	10'1" x 8'6"

st	cupboard	*ov	tall housing accommodating integrated single oven and microwave	w/m	integrated washing machine	b	boiler	L	loft hatch
e/s	en suite	ov	integrated single oven	d/w	integrated dishwasher	g	gas meter		
w	wardrobe	f/f	integrated fridge/freezer	cyl	hot water cylinder	c	electric meter		