

# The *Sissinghurst*

Plots 4, 39, 40, 41, 42, 45 & 46

A substantial four bedroom home featuring an abundance of space in which to socialise. The ground floor comprises a living room, kitchen/family area and separate dining room plus a WC. To the first floor are four bedrooms, family bathroom and en suite.



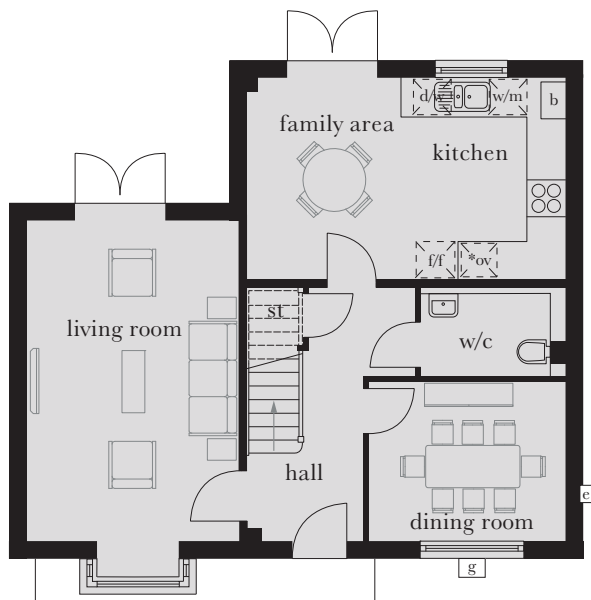
*Computer generated image shown above of plots 4 and 45. External finishes and landscaping may vary. Please refer to Sales Advisor for further details. All dimensions are approximate and should not be used for carpet sizes, appliance spaces or furniture. Furniture not to scale and all positions are indicative. Wardrobes are shown to suggest position only, and are not included as standard unless otherwise stated. We operate a policy of continuous improvement and individual features such as kitchen and bathroom layouts, doors, windows, garages and elevational treatments may vary from time to time. Consequently these particulars should be treated as general guidance only and do not constitute a contract, part of a contract or a warranty.*



First Floor

### First Floor

Master Bedroom	3.400m x 3.065m	11'2" x 10'1"
Bedroom 2	3.455m x 3.325m	11'4" x 10'11"
Bedroom 3	3.465m x 3.430m (max)	11'4" x 11'3" (max)
Bedroom 4	2.660m x 2.535m	8'9" x 8'4"



### Ground Floor

Kitchen/Family Area	5.435m x 3.410m	17'10" x 11'2"
Living Room	5.870m x 3.590m (max)	19'3" x 11'9" (max)
Dining Room	3.335m x 2.730m	10'11" x 9'0"

st	cupboard	*ov	tall housing accommodating integrated single oven, microwave and warming drawer	w/m	integrated washing machine	g	gas meter
c/s	en suite	f/f	integrated fridge/freezer	h	hot water cylinder	e	electric meter
w	wardrobe	d/w	integrated dishwasher	b	boiler	L	loft hatch



Bay window variation  
to plots 4 & 45

Ground Floor