

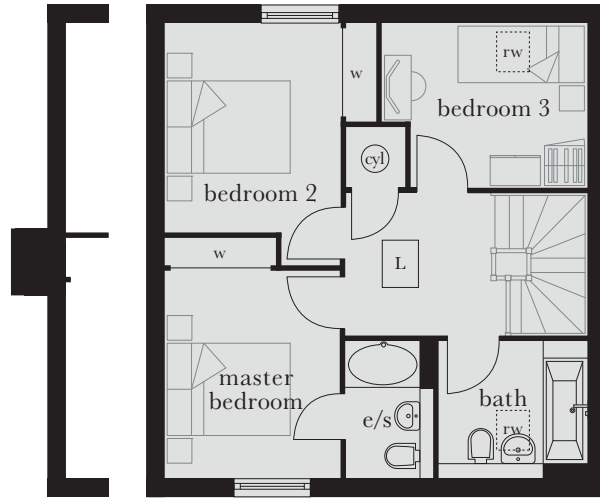
The Standen

Plots 8, 9, 10, 11 & 12

This cosy family home comprises a living room and kitchen/dining area, which opens out on to the garden. On the first floor there are three bedrooms, an en suite and a family bathroom. The property also benefits from a WC and storage space downstairs.



Computer generated image shown above. External finishes and landscaping may vary. Please refer to Sales Advisor for further details. All dimensions are approximate and should not be used for carpet sizes, appliance spaces, or furniture. Furniture not to scale and all positions are indicative. Wardrobes are shown to suggest position only, and are not included as standard unless otherwise stated. We operate a policy of continuous improvement and individual features such as kitchen and bathroom layouts, doors, windows, garages and elevational treatments may vary from time to time. Consequently these particulars should be treated as general guidance only and do not constitute a contract, part of a contract or a warranty.

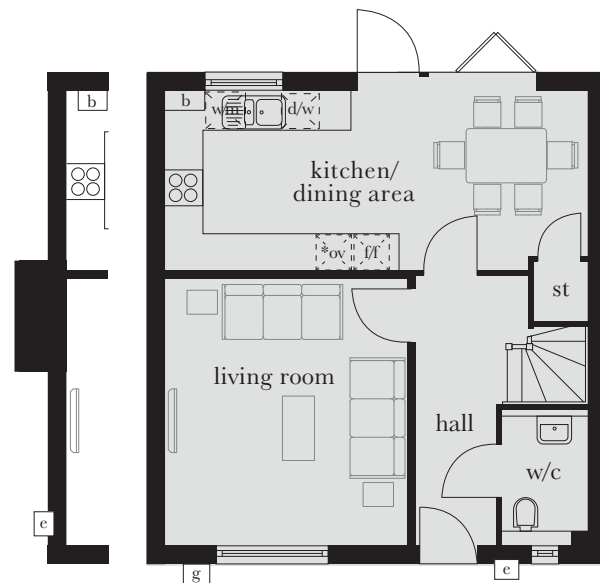


Plot 8
end of
terrace

First Floor

First Floor

Master Bedroom	4.132m x 4.007m (max)	13'6" x 13'1" (max)
Bedroom 2	4.132m x 3.275m (max) (max)	13'6" x 10'8" (max) (max)
Bedroom 3	2.682m x 2.650m (max) (max)	8'8" x 8'7" (max) (max)



Plot 8
end of
terrace

Ground Floor

Ground Floor

Kitchen/Dining Area	6.875m x 2.910m	22'6" x 9'6"
Living Room	4.315m x 3.959m	14'1" x 12'11"

st	cupboard	cyl	hot water cylinder	b	boiler	d/w	integrated dishwasher	---	reduced head height
c/s	en suite	g	gas meter	ov	tall housing accommodating integrated single oven, microwave and warming drawer	w/m	integrated washing machine	L	loft hatch
w	wardrobe	e	electric meter	f/f	integrated fridge/freezer	rw	roof window		